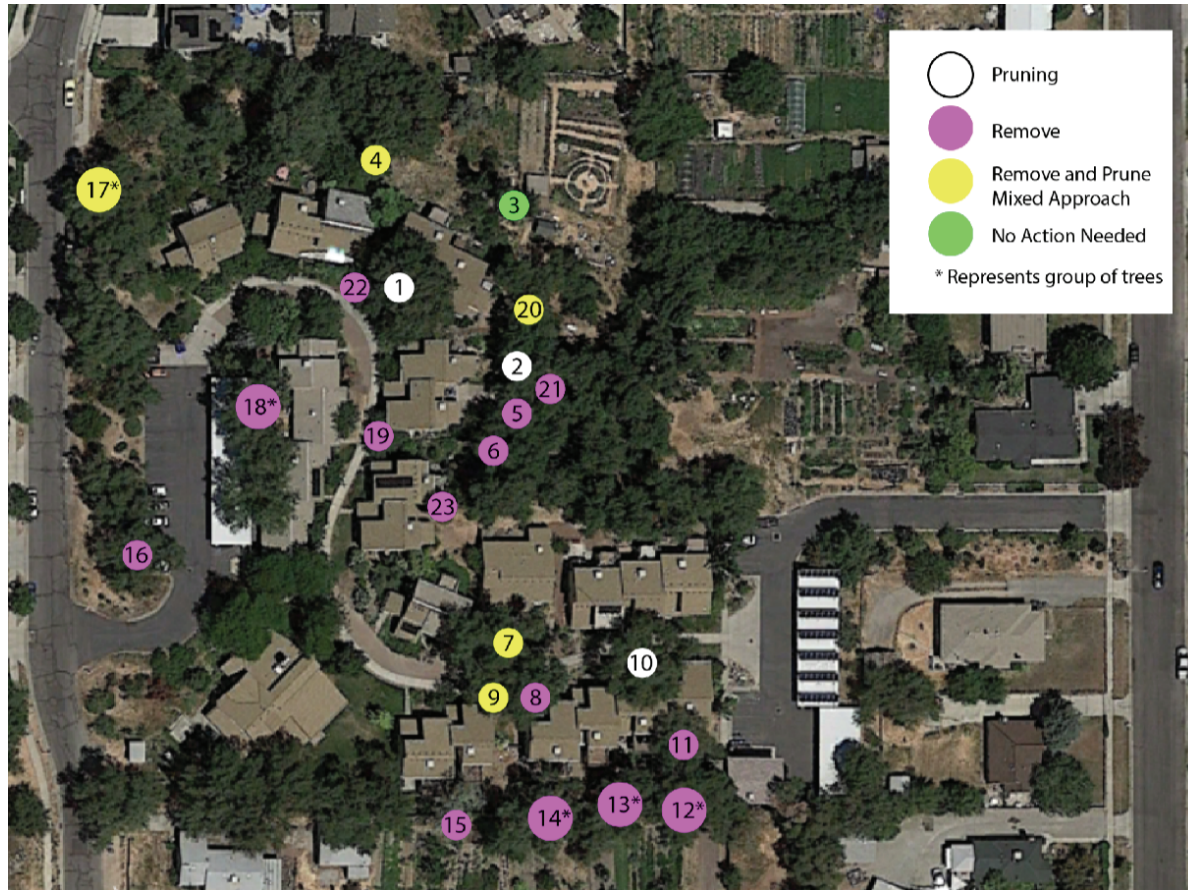


# Arbor Concepts, LLC Work Order

## Wasatch Commons - 1411 Utah St.



### PHASE #2 GRINDING STUMPS

TREE 15 - LEAVE STUMP AS TO NOT DISTURB REMAINING  
MULLBERRY ROOTS

TREE GROUP 14 - 60" AND 48" STUMPS TO GRIND BELOW  
GROUND LEVEL

TREE GROUP 13 -LEAVE STUMP TO GRIND DURING WINTER ACCESS.

TREE GROUP 12 - 15" 25" (IN BETWEEN GARAGE AND FENCE)  
60" , 24" AND ROOT IN LAURENS YARD STUMPS TO GRIND BELOW  
GROUND LEVEL

TREE GROUP 11 - 36" GRIND BELOW GROUND LEVEL

TREE GROUP 8 - 15", 22", 37" 32" 10" 26"  
STUMPS TO GRIND TO GROUND LEVEL

TOTAL: \$2,188